

Fashion for your profession

Optimum freedom of movement

NORIT

 PLANAM

GB

NORIT






ROBUST YET LIGHT

Modern work clothes not only offer protection, they are also comfortable to wear and give you the freedom of movement you need. And attractive clothing allows the wearer to feel at their most comfortable. The PLANAM Norit series combines all these things: These jackets and trousers impress with the perfect mix of light weight, elasticity and durability.

The PLANAM Norit range offers outstanding comfort. With up to eight different colours, everyone can find their personal favourite look. Light-weight fabrics and elastic stretch inserts ensure the seat is comfortable and provide maximum freedom of movement whilst you carry out your work. Tools and personal belongings can be easily tucked away in the large pockets.

The PLANAM Norit Outdoor winter jackets are breathable, waterproof and windproof, making them the perfect companion on cold days. The windproof PLANAM Norit Outdoor softshell jacket is the perfect choice as the seasons start to change. The reinforced trim on the elbows and shoulders guarantees robustness and is a visual highlight. The PLANAM Norit hybrid jackets always fit perfectly thanks to their stretch inserts on the side.



	Men's	Women's
Material	<div>Dungarees, Shorts, Trousers</div> <div>Outer fabric 65 % polyester, 35 % cotton (approx. 245 g/m²)</div> <div>Reinforcements 100 % nylon (approx. 195 g/m²)</div> <div>Elastic insert 95 % polyester, 5 % elastane (approx. 165 g/m²)</div> <div>Hybrid jacket</div> <div>Main colour material 65% polyester, 35% cotton (approx. 245 g/m²)</div> <div>Contrasting material Softshell outer layer 96% polyester, 4% elastane (TPU membran approx. 260 g/m²)</div> <div>Contrasting material Softshell inner layer 100% polyester (Fleece)</div> <div>Reinforcements 100% nylon (approx. 195 g/m²)</div> <div>Elastic insert 95% polyester, 5% elastane (approx. 165 g/m²)</div> <div>Pure Softshell jacket</div> <div>Outer layer 96% polyester, 4% elastane (TPU membran, approx. 260 g/m²)</div> <div>Inner layer 100 % polyester (Fleece)</div> <div>Reinforcements 100% nylon (approx. 195 g/m²)</div> <div>Elastic insert 95% polyester, 5% elastane (approx. 165 g/m²)</div>	
Design	Reflective appliqués (except shorts)	
Colours	black/black, slate/black, royal blue/black, sand/black, green/black, olive/black, zinc/black, red/black, black (Pure Softshell jacket)	
Clothing sizes	<div>Normal sizes 42 – 44 – 46 – 48 – 50 – 52 – 54 – 56 – 58 – 60 – 62 – 64</div> <div>Slim sizes 90 – 94 – 98 – 102 – 106 – 110</div> <div>Plus sizes 24 – 25 – 26 – 27 – 28 – 29</div> <div>International sizes XS – S – M – L – XL – XXL – XXXL – 4XL</div>	<div>Normal sizes 34 – 36 – 38 – 40 – 42 – 44 – 46 – 48 – 50 – 52 – 54</div> <div>International sizes XS – S – M – L – XL – XXL – XXXL – 4XL</div>
Care instructions	<div></div>	
Knee protection	certified knee protection in conjunction with a PLANAM knee pad (item no. 9901027)	

Outdoor

Softshell blouson

Outer fabric

100 % polyester (TPU membran, approx. 440 g/m²)

Inner layer

100 % polyester

Trim material

100 % polyester

Winter jacket

Outer fabric

100 % polyester (TPU membran, approx. 245 g/m²)

Padding

100 % polyester

Lining

100 % polyester

Design

Reflective piping (Winter jacket)


Colours

black

International sizes

XS – S – M – L – XL – XXL – XXXL – 4XL

Care





Content

MATERIAL & SIZES

Size chart004

MEN'S

Hybrid jacket006

Pure Softshell jacket008

Trousers010

Dungarees012

Shorts014

Colour overview016

WOMEN'S

Hybrid jacket018

Pure Softshell jacket020

Trousers022

Dungarees024

Shorts026

OUTDOOR

Softshell blouson030

Men's Winter jacket032

Women's Winter jacket034

INFORMATIONEN

Standards &036

Certifications

Service038

Item overview039

NORIT

Men's Hybrid jacket

Well combined

The perfect combination of polyester and cotton makes you look good and ensures the clothes are always comfortable to wear.



Extras

- 2 side pockets with zip and robust flap
- 1 breast pocket on the right with zip
- reflective piping on the breast pocket and on the back
- front zip
- fleece lining in the collar, arms and shoulders
- elbows with robust trim
- side stretch insert for optimum fit

Clothing sizes

Normal sizes

42 – 44 – 46 – 48 – 50 – 52 – 54 – 56 – 58 – 60 – 62 – 64

Slim sizes

90 – 94 – 98 – 102 – 106 – 110

Plus sizes

24 – 25 – 26 – 27 – 28 – 29

Certificates and standards




Fits any body shape thanks to side **stretch inserts**



Side pockets with reliable zip



 View this item in all available colours under "Products" at planam.de



Colours



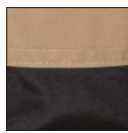
6500
black/black



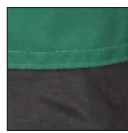
6501
slate/black



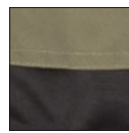
6502
royal blue/black



6503
sand/black



6504
green/black



6505
olive/black



6506
zinc/black



6507
red/black

NORIT

Men's Pure Softshell jacket

Distinctive design, durable, elastic and functional

The perfect complement to any pair of Norit trousers. The reinforcement at the elbows and the reflective appliqués are a visual highlight. The side stretch inserts guarantee optimum fit and freedom of movement.



Extras

- 1 breast pocket on the right with zip
- reflective appliqué on the breast pocket and on the back
- 2 side pockets with zip and robust flap
- front zip
- elbow with reinforced trim
- side stretch insert for optimum fit
- soft fleece lining

Clothing sizes

Normal sizes

42 – 44 – 46 – 48 – 50 – 52 – 54 – 56 – 58 – 60 – 62 – 64

Slim sizes

90 – 94 – 98 – 102 – 106 – 110

Plus sizes

24 – 25 – 26 – 27 – 28 – 29

Certificates and standards



Your belongings are protected in the **breast pocket with zip**



Reflective piping as a visual highlight in the darkness

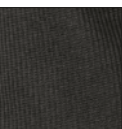


Very comfortable to wear thanks to **elastic inserts** on the sides



360° View this item from all angles under "Products" at planam.de

Colour



6435
black



NORIT

Men's trousers

Light work trousers for optimum freedom of movement

Light material and elastic inserts in the crotch and on the seat ensure the perfect fit and give you the freedom of movement that you need. The light blended fabric is extremely easy to clean. The areas subject to the most wear are reinforced with nylon with a two-tone finish.



Extras

- 2 pouch pockets
- 2 patch knee pockets which are opened from above
- double ruler pocket on the right with compartment for pens and fastening option
- 1 thigh pocket with flap and Velcro closure on left leg
- mobile phone pocket on the left with zip
- waistband with elastic insert on the seat
- elastic insert in the crotch
- 2 rear pockets
- zip fly
- waistband with 7 belt loops and jeans button
- reflective appliqués

Clothing sizes

Normal sizes

42 – 44 – 46 – 48 – 50 – 52 – 54 – 56 – 58 – 60 – 62 – 64

Slim sizes

90 – 94 – 98 – 102 – 106 – 110

Plus sizes

24 – 25 – 26 – 27 – 28 – 29

Certificates and standards



EN 14404:2010
Type 2, Performance class 1

Certified as reinforced knees in conjunction with PLANAM knee pads (article number 9901027)



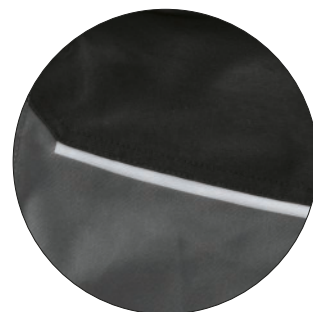
More space for **work tools** in the ruler pocket



The **knee pockets** allow for the use of knee pads



The **elastic fabric** in the crotch ensures you are very comfortable



The **reflective strips** underneath the **knee pocket** emphasise the sporty design



360° View this item in all available colours under "Products" at planam.de



Colours



6400 black/black	6401 slate/black	6402 royal blue/black	6403 sand/black	6404 green/black	6405 olive/black	6406 zinc/black	6407 red/black
---------------------	---------------------	--------------------------	--------------------	---------------------	---------------------	--------------------	-------------------

NORIT

Men's dungarees

Light work trousers for optimum freedom of movement

Elastic inserts at the crotch and on the seat ensure the perfect fit and the freedom of movement you need. The lightweight fabric blend is extremely easy to clean and very comfortable to wear. Areas subject to the most wear are reinforced with nylon and its two-tone design gives it an added sporty look.



Extras

- 2 inserted pouch pockets
- 2 patch knee pockets that are opened from above
- bib pocket with flap, velcro fastener and pen holder
- strap with elastic rubber insert
- high back with support braces
- double ruler pocket on the right with pen holder and fastening option
- thigh pocket on the left with flap and pen holder
- mobile phone pocket on the left with zip
- band with elastic insert on the seat
- elastic insert on the crotch
- 2 back pockets
- zip fly
- waistband adjustable with jeans button
- reflective appliqués

Clothing sizes

Normal sizes

42 – 44 – 46 – 48 – 50 – 52 – 54 – 56 – 58 – 60 – 62 – 64

Slim sizes

90 – 94 – 98 – 102 – 106 – 110

Plus sizes

24 – 25 – 26 – 27 – 28 – 29

Certificates and standards



Certified as reinforced knees in conjunction with PLANAM knee pads (article number 9901027)

EN 14404:2010

Type 2, Performance class 1



Your smartphone or pens are always close at hand in the roomy **bib pocket**



More freedom of movement with **elastic inserts at the crotch**



Always fits perfectly - thanks to its **adjustable waist**



Knee pockets for inserting protective **knee pads**



360° View this item in all available colours under "Products" at planam.de



Colours



6520 black/black 6521 slate/black 6522 royal blue/black 6523 sand/black 6524 green/black 6525 olive/black 6526 zinc/black 6527 red/black

NORIT

Men's shorts

Light shorts for optimum freedom of movement

Light material and elastic inserts in the crotch and on the seat ensure the perfect fit and give you the freedom of movement that you need. The light blended fabric is extremely easy to clean and very comfortable to wear.



Extras

- 2 pouch pockets
- double ruler pocket on the right with compartment for pens and fastening option
- 1 thigh pocket with flap and Velcro closure on left leg
- mobile phone pocket on the left with zip
- waistband with elastic insert on the seat
- elastic insert in the crotch
- 2 rear pockets
- zip fly
- waistband with 7 belt loops and jeans button

Clothing sizes

International sizes

XS – S – M – L – XL – XXL – XXXL – 4XL

Certificates and standards



Protected **thigh pockets** for your most important utensils




Elastic inserts in the crotch area for maximum freedom of movement



Elastic, high waistband for optimum comfort



 View this item in all available colours under "Products" at planam.de

Colours



6450 black/black	6451 slate/black	6452 royal blue/black	6453 sand/black	6454 green/black	6455 olive/black	6456 zinc/black	6457 red/black
---------------------	---------------------	--------------------------	--------------------	---------------------	---------------------	--------------------	-------------------



NORIT

Variety of colours

Work clothing from the new PLANAM Norit Collection is available in eight colour combinations. Reflective appliqué also creates visual highlights and emphasise the sporty design.



NORIT

Women's Hybrid jacket

Well combined

The perfect combination of polyester and cotton will make you look good and feel comfortable. The fitted cut and elastic inserts ensure maximum comfort.



Extras

- 2 side pockets with zip and robust flap
- 1 breast pocket on the right with zip
- reflective piping on the breast pocket and on the back
- front zip
- fleece lining in the collar, arms and shoulders
- elbows with robust trim
- side stretch insert for optimum fit

Clothing sizes

Normal sizes
34 – 36 – 38 – 40 – 42 – 44 – 46 – 48 – 50 – 52 – 54

Certificates and standards




Suitable for any body shape thanks to its **elastic inserts**



Protected **side pockets** with reliable **zip**



 View this item in all available colours under "Products" at planam.de



Colours



6510 black/black	6511 slate/black	6512 royal blue/black	6513 sand/black	6514 green/black	6515 olive/black	6516 zinc/black	6517 red/black
---------------------	---------------------	--------------------------	--------------------	---------------------	---------------------	--------------------	-------------------

NORIT

Women's Pure Softshell jacket

Distinctive design, durable, elastic and functional

The perfect complement to any pair of Norit trousers. The reinforcement at the elbows and the reflective appliqués are a visual highlight. The side stretch inserts guarantee optimum fit and freedom of movement.



Extras

- 1 breast pocket on the right with zip
- reflective appliqué on the breast pocket and on the back
- 2 side pockets with zip and robust flap
- front zip
- elbow with reinforced trim
- side stretch insert for optimum fit
- soft fleece lining

Clothing sizes

Normal sizes

34 – 36 – 38 – 40 – 42 – 44 – 46 – 48 – 50 – 52 – 54

Certificates and standards



Closable **breast pocket** for valuables



Reflective piping as a visual highlight in the darkness



Perfect fit thanks to elastic **stretch inserts**



360° View this item from all angles under "Products" at planam.de

Colour



6445
black



NORIT

Women's trousers

Comfortable, feminine and light

Easy care blended fabric that is reinforced with nylon in the areas that suffer the most wear. The elastic inserts in the crotch and seat and visual highlights created by the reflective appliqué make these the perfect work trousers.



Extras

- 2 pouch pockets
- 2 patch knee pockets which are opened from above
- double ruler pocket on the right with compartment for pens and fastening option
- 1 thigh pocket with flap and Velcro closure on left leg
- mobile phone pocket on the left with zip
- waistband with elastic insert on the seat
- elastic insert in the crotch
- 2 rear pockets
- zip fly
- waistband with 7 belt loops and jeans button
- reflective appliqués

Clothing sizes

Normal sizes

34 – 36 – 38 – 40 – 42 – 44 – 46 – 48 – 50 – 52 – 54

Certificates and standards



Certified as reinforced knees in conjunction with PLANAM knee pads (article number 9901027)
EN 14404:2010
Type 2, Performance class 1



Always have your important tools to hand thanks to the **ruler pocket**



The **knee pockets** allow for the use of knee pads



The **elastic fabric** in the crotch ensures you are very comfortable



The **reflective strips underneath the knee pocket** emphasise the sporty design



360° View this item in all available colours under "Products" at planam.de

Colours



6410
black/black

6411
slate/black

6412
royal blue/black

6413
sand/black

6414
green/black

6415
olive/black

6416
zinc/black

6417
red/black

NORIT

Women's dungarees

Practical and comfortable

Made of mixed fabric, the pockets on these comfortable dungarees offer storage space for everything you need – whether that's a smartphone, tools or loose change. Elastic inserts in the seat and crotch area give you lots of room to move.



Extras

- 2 inserted pouch pockets
- 2 patch knee pockets that are opened from above
- bib pocket with flap, velcro fastener and pen holder
- strap with elastic rubber insert
- high back with support braces
- double ruler pocket on the right with pen holder and fastening option
- thigh pocket on the left with flap and pen holder
- mobile phone pocket on the left with zip
- band with elastic insert on the seat
- elastic insert on the crotch
- 2 back pockets
- waistband adjustable with jeans button
- reflective appliqués

Clothing sizes

Normal sizes

34 – 36 – 38 – 40 – 42 – 44 – 46 – 48 – 50 – 52 – 54

Certificates and standards



Certified as reinforced knees in conjunction with PLANAM knee pads (article number 9901027)

EN 14404:2010

Type 2, Performance class 1



Your smartphone or pens are always close at hand in the roomy **bib pocket**



More freedom of movement with **elastic inserts at the crotch**




Always fits perfectly - thanks to its **adjustable waist**



Knee pockets for inserting protective **knee pads**



 View this item in all available colours under "Products" at planam.de



Colours



6530 black/black 6531 slate/black 6532 royal blue/black 6533 sand/black 6534 green/black 6535 olive/black 6536 zinc/black 6537 red/black

NORIT

Women's shorts

Light shorts for optimum freedom of movement

Light material and elastic inserts in the crotch and on the seat ensure the perfect fit and give you the freedom of movement that you need. The light blended fabric is extremely easy to clean and very comfortable to wear.



Extras

- 2 pouch pockets
- double ruler pocket on the right with compartment for pens and fastening option
- 1 thigh pocket with flap and Velcro closure on left leg
- mobile phone pocket on the left with zip
- waistband with elastic insert on the seat
- elastic insert in the crotch
- 2 rear pockets
- zip fly
- waistband with 7 belt loops and jeans button

Clothing sizes

International sizes

XS – S – M – L – XL – XXL – XXXL – 4XL

Certificates and standards



Everything to hand and protected in the **thigh pocket**



Stretch inserts in the crotch area for optimum freedom of movement



Very comfortable to wear thanks to its higher, **elastic waistband**



360° View this item in all available colours under "Products" at planam.de

Colours



6460 black/black 6461 slate/black 6462 royal blue/black 6463 sand/black 6464 green/black 6465 olive/black 6466 zinc/black 6467 red/black

NORIT OUTDOOR

NORIT OUTDOOR

Softshell blouson

Cool blouson for when the seasons change

The jacket for cooler temperatures in a discreet black is perfectly combined with any pair of Norit trousers. The reinforcement on the elbows and shoulders is a robust and visual highlight.



Extras

- windproof
- water-repellent
- 2 side pockets with zip closure
- front zip
- ribbed cuffs and hem
- elbows and shoulders fitted with robust trim

Clothing sizes

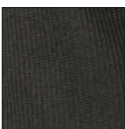
International sizes

XS – S – M – L – XL – XXL – XXXL – 4XL



360° View this item from all angles under "Products" at planam.de

Colour



6420
black

NORIT OUTDOOR

Men's Winter jacket

Stylish all-rounder

The perfect outdoor jacket for work and leisure. The cool and subtle design impresses on first glance. The pleasant appearance of the outer material and the numerous pockets impress when you take a closer second look.



breathable

3.000 g/m² / 24 h



waterproof

3.000 mm



windproof

Extras

- breathable
- waterproof
- windproof
- glued seams
- 2 side pockets with zip closure
- 2 chest pockets with zip closure
- front zip
- hood can be rolled up into the collar and can be adjusted
- 1 inner pocket
- adjustable drawstring at the waist
- cuffs adjustable with Velcro
- fleece in the collar
- black reflective piping on the sleeves and back

Clothing sizes

International sizes

XS – S – M – L – XL – XXL – XXXL – 4XL




The **reflective piping** on the shoulder highlights the dynamic look



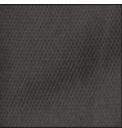
The structure of the material ensures that it is comfortable to wear and creates a stunning visual effect



 View this item from all angles under "Products" at planam.de



Colour



6430
black

NORIT OUTDOOR

Women's Winter jacket

Robust, chic and functional

The Norit Women's Winter Jacket was developed to match the Norit Women's Trousers. Everything a woman needs can be stored away in the numerous pockets. The jacket also keeps you perfectly warm and is breathable and waterproof.



breathable

3.000 g/m² / 24 h



waterproof

3.000 mm



windproof

Extras

- breathable
- waterproof
- windproof
- glued seams
- 2 side pockets with zip closure
- 2 chest pockets with zip closure
- front zip
- hood can be rolled up into the collar and can be adjusted
- 1 inner pocket
- adjustable drawstring at the waist
- cuffs adjustable with Velcro
- fleece in the collar
- black reflective piping on the sleeves and back

Clothing sizes

International sizes

XS – S – M – L – XL – XXL – XXXL – 4XL




When illuminated, the **reflective stripes on the shoulder** reflect light

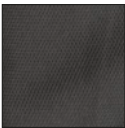


The structure of the material keeps moisture out and creates a fashionable highlight



 View this item from all angles under "Products" at planam.de

Colour



6440
black



STANDARDS & CERTIFICATION

DIN EN 14404 Knee protection for workers kneeling down



Working in a kneeling position creates constant pressure on the knee. Knee protection is designed to distribute the forces produced evenly across it. In addition to this, it is designed to prevent injuries or damage caused by hard surfaces, small stones or similar objects lying on the ground. Knee protection is subdivided into 4 types:

- Type 1: Knee protection that is separate from clothing and fastened to the leg.
- Type 2: Pads inserted into pockets on trouser legs or permanently attached to the trousers.
- Type 3: Equipment that is not attached to the body.
- Type 4: Knee protection forming part of a unit with additional functions.

In addition to this, there are two performance classifications:

- Level 1: The knee protection is suitable for even ground where there is no risk of objects over 1 cm in height.
- Level 2: The knee protection is for use in challenging conditions, such as for example when kneeling on stones in mines or quarries.

The PLANAM knee pad product no. 9901027 is certified as Type 2, Level 1 knee protection. This certification only applies in conjunction with PLANAM trousers, dungarees or overalls and cannot be transferred to other products.



The OEKO-TEX® Standard 100 is an independent testing and certification system for raw, intermediate and end products for textiles from all stages of processing. Examples of certifiable articles are raw and dyed/refined yarns, raw and dyed/refined woven and knitted fabrics, ready-made articles (garments of all types, home textiles, bedding, terry towelling, toys made of textiles and many others).

Criteria

Tests for harmful substances cover:

- substances banned by law
- substances regulated by law
- chemicals that are known to be potentially harmful to health (but are not yet regulated by law)
- healthcare parameters

In their entirety, the requirements go well beyond existing national legislation.

Why OEKO-TEX®?

The OEKO-TEX® Standard 100 was developed in the early 1990s as a response to the need of consumers and the general public for textiles that do not pose a risk to health. Negative headlines such as “Poisons in textiles” were widespread at the time, labelling all chemicals used in the production of textiles as negative and harmful to health.

Fashionable colours, easy care, long life and many other functional properties are demanded of textiles today and are, to some extent, and depending on their intended use (e.g. for professional and protective clothing), quite indispensable.

UV protective clothing with integrated sun protection



The largest organ of the human body is the skin, and it is exposed to great danger in summer. UV rays from the sun can increase the risk of skin cancer. Standard textiles are radiolucent, providing insufficient protection. PLANAM’s UV-protective clothing gives guaranteed certified safety.

Awarded UV protection certificates “PROTECT 80” and “PROTECT 40”, this range guarantees maximum prevention. Just like for sunscreens, the figure indicates the protection factor for safely spending longer in the sun. Our PLANAM models allow the wearer to remain in the sun 80 and 40 times longer than those without protection. With their integrated sun protection factor, the finished garments provide the skin with optimum protection. Those with sensitive skin can stay in the sun longer without having to cover themselves in sunscreen. It is important to know the individual skin type in order to determine the individual’s protection time (length of possible exposure to the sun without risk of skin damage). The stated UV protection factor (e.g. Protect 80) gives the factor by which the individual’s protection time can be extended just by wearing these textiles.

SERVICE

The first impression is the key

The right work clothing is always a calling for your company and is also used as free advertising space with your logo. We bring your message to a wider audience – with the PLANAM finishing service.

Infinite variety

There are thousands of variations and options to personalise the PLANAM products and create an individual design. Here we are showing you a small selection of what is possible, in order to inspire you and give you ideas. Please contact us for expert advice to find out which type of finishing fits most optimally with our products. You explain your requirements and we will make them happen in as short time as possible.

Small order or large production runs

It doesn't matter whether it is a small trade business with 5 employees that needs to be equipped with CI Clothing or a large industrial company with several hundred employees. We can create up to 1000 emblems a day for you at the Herzebrock-Clarholz site.

Finishing of Personal Protective Equipment (PPE)

It is particularly important in relation to the finishing of Personal Protective Equipment (PPE) that the type of finish added is specifically suited to the PPE type examination certificate and is recertified accordingly. Here to, PLANAM offers a multitude of certified options for attaching your company logo on the PPE.

For any modification to the PPE which is not recertified, the type-examination certificate will no longer be valid and the complete protection of the wearer can no longer be guaranteed.



Available in any colour and with vast design options for a size of max. 390 x 390 mm.



Special embroidery thread made from high-quality polyester guarantees long-term durability.



Item overview

Men's			Women's			Outdoor		
Hybrid jacket	black/black	6500	Hybrid jacket	black/black	6510	Softshell blouson	black	6420
	slate/black	6501		slate/black	6511			
	royal blue/black	6502		royal blue/black	6512			
	sand/black	6503		sand/black	6513			
	green/black	6504		green/black	6514			
	olive/black	6505		olive/black	6515			
	zinc/black	6506		zinc/black	6516			
	red/black	6507		red/black	6517			
Pure Softshell jacket	black	6435	Pure Softshell jacket	black	6445	Men's Winter jacket	black	6430
Trousers	black/black	6400	Trousers	black/black	6410	Women's Winter jacket	black	6440
	slate/black	6401		slate/black	6411			
	royal blue/black	6402		royal blue/black	6412			
	sand/black	6403		sand/black	6413			
	green/black	6404		green/black	6414			
	olive/black	6405		olive/black	6415			
	zinc/black	6406		zinc/black	6416			
	red/black	6407		red/black	6417			
Dungarees	black/black	6520	Dungarees	black/black	6530			
	slate/black	6521		slate/black	6531			
	royal blue/black	6522		royal blue/black	6532			
	sand/black	6523		sand/black	6533			
	green/black	6524		green/black	6534			
	olive/black	6525		olive/black	6535			
	zinc/black	6526		zinc/black	6536			
	red/black	6527		red/black	6537			
Shorts	black/black	6450	Shorts	black/black	6460			
	slate/black	6451		slate/black	6461			
	royal blue/black	6452		royal blue/black	6462			
	sand/black	6453		sand/black	6463			
	green/black	6454		green/black	6464			
	olive/black	6455		olive/black	6465			
	zinc/black	6456		zinc/black	6466			
	red/black	6457		red/black	6467			



Your PLANAM specialists

You can view interactive images of
products from the Norit range here



MED.UMC - Mijlen, Nimmikation, Bielefeld



Fashion for your profession